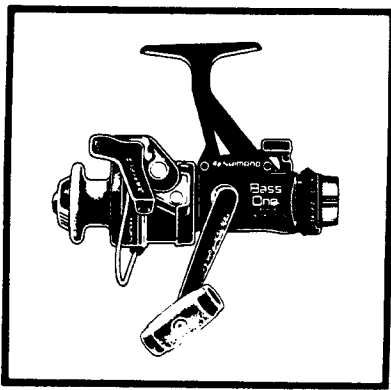


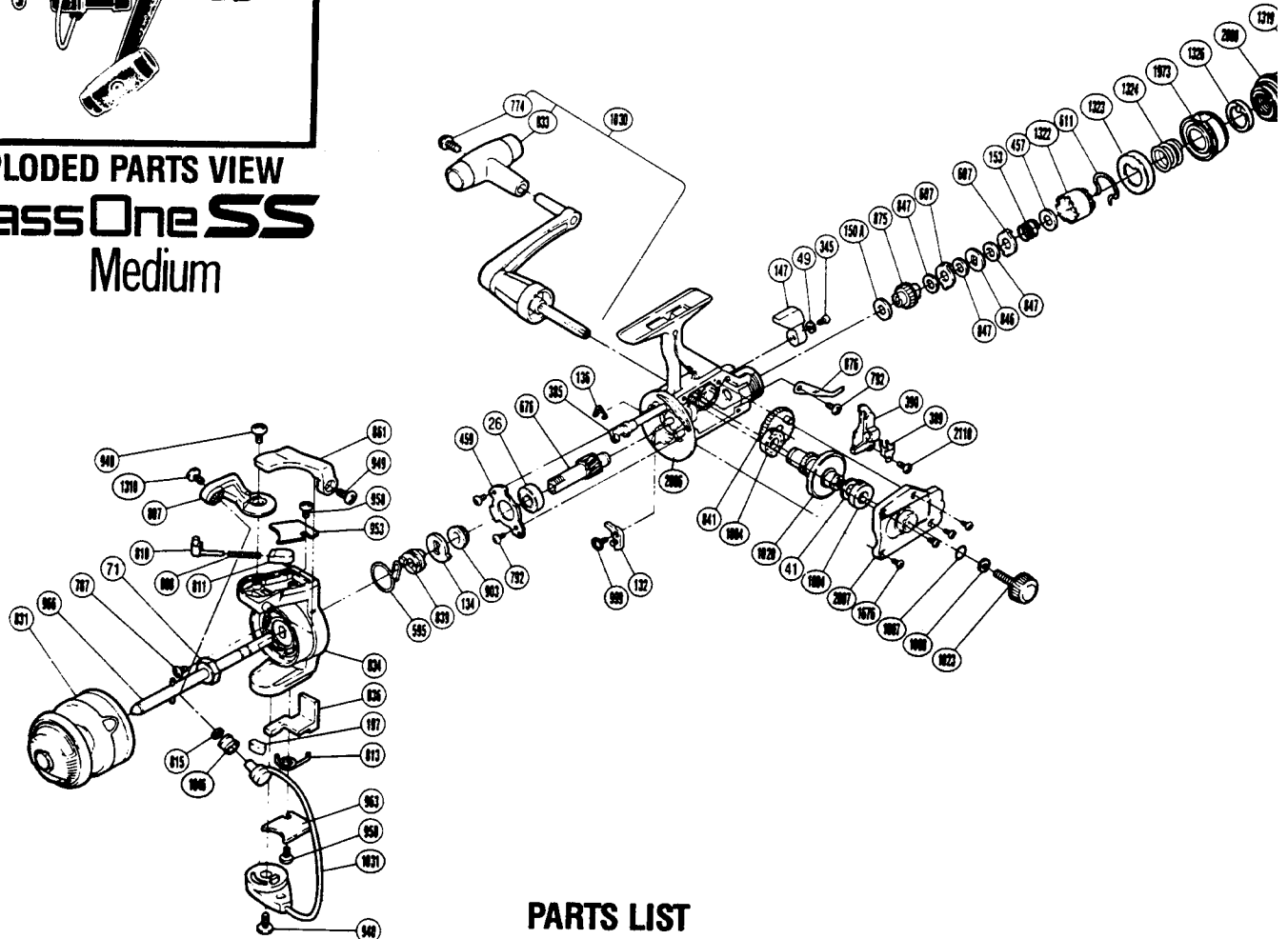
# SHIMANO

## 1989 REPAIR MANUAL

Shimano American Corporation, One Shimano Dr  
Irvine, CA 92711



### EXPLODED PARTS VIEW Bass One SS Medium



### PARTS LIST

#### PART # DESCRIPTION

RD 0026	Ball Bearing
RD 0041	Drive Gear Washer
RD 0049	Lock Washer
RD 0071	Rotor Nut
RD 0132	Anti-Reverse Pawl Assembly
RD 0134	Anti-Reverse Ratchet
RD 0136	Anti-Reverse Cam Spring
RD 0147	Anti-Reverse Lever
RD 150A	Drag Washer "C2" (White)
RD 0153	Drag (Coil) Spring
RD 0197	Bail Trip Slide Cam
RD 0345	Anti-Reverse Lever Screw
RD 0385	Anti-Reverse Cam
RD 0389	Oscillating Slider Retainer
RD 0390	Oscillating Slider
RD 0457	Drag Spring Washer "A"
RD 0459	Bearing Retainer
RD 0595	Anti-Reverse Pawl Spring
RD 0607	Eared Washer "B"
RD 0611	Hold Click Spring
RD 0676	Pinion Gear
RD 0774	Handle Knob Screw
RD 0787	Nut Lock Screw

#### PART # DESCRIPTION

RD 0792	Bearing Retainer Screw
RD 0807	Bail Arm
RD 0808	Bail Spring
RD 0810	Bail Spring Guide A
RD 0811	Bail Spring Guide B
RD 0813	Lever Spring
RD 0815	Line Roller Washer
RD 0831	Spool Assembly (Universal)
RD 0833	Handle Knob
RD 0834	Rotor
RD 0836	Bail Trip Lever
RD 0839	Anti-Reverse Spring Holder
RD 0841	Oscillating Gear
RD 0846	Key Washer "A"
RD 0847	Drag Washer "H1"
RD 0861	Quick-Fire II Trigger
RD 0875	Drag Shift
RD 0876	Drag Click
RD 0903	Pinion Spacer
RD 0940	Bail Trip Cam Screw
RD 0949	Trigger Screw
RD 0953	Bail Spring Cover
RD 0958	Bail Trip Cover Screw

#### PART # DESCRIPTION

RD 0963	Bail Trip Cover
RD 0966	Main Shaft
RD 0999	Anti-Reverse Pawl Screw
RD 1004	Bushing A
RD 1007	Lock Washer Retainer
RD 1008	Handle Lock Washer
RD 1020	Drive Gear
RD 1023	Handle Screw Cap
RD 1030	Handle Assembly
RD 1031	Bail Assembly
RD 1046	Sic Ceramic Roller
RD 1310	Line Roller Screw
RD 1319	Drag Knob Screw
RD 1322	Pressure Screw
RD 1323	Pre-Set Spring Cover
RD 1324	Pre-Set Spring
RD 1326	Pre-Set Cam
RD 1676	Side Cover Screw
RD 1973	Pre-Set Ring
RD 2006	Body
RD 2007	Side Cover
RD 2008	Drag Knob
RD 2110	Slider Retainer Screw